



**PRODUCTS AND SYSTEM**



# ***Road and Urban Maintenance Work Systems***

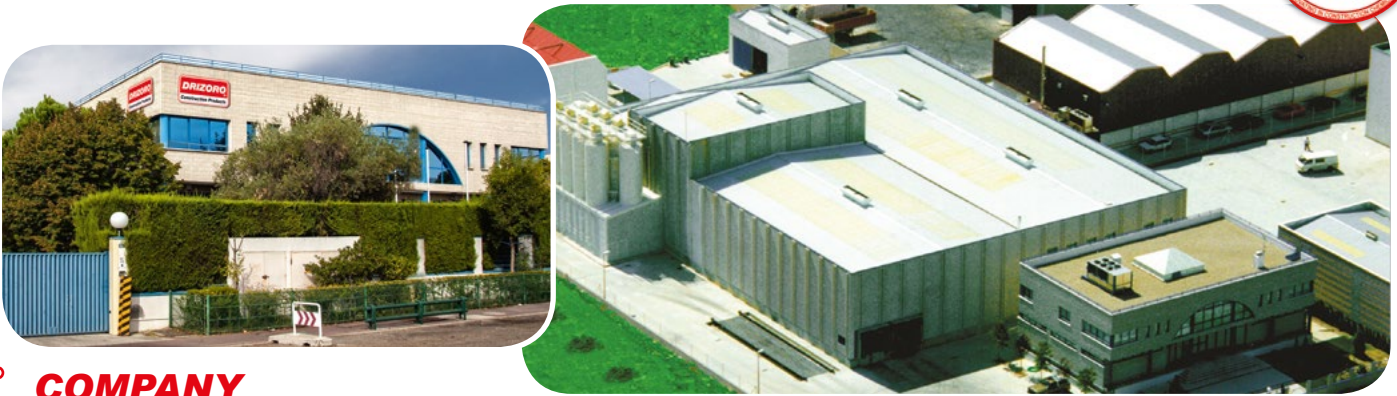
---

---



***Special mortars for fixing, anchoring and repair  
of elements on concrete and asphalt surfaces***





## COMPANY

**DRIZORO S.A.U.** is a Spanish company established in 1977, beginning activity its a manufacturer of chemical products for construction. Nowadays, the company is a leader on supplying speciality products and systems designed for waterproofing, concrete repair, flooring and decorative finishes.

Our **Headquarters** and Production Plant is based in Madrid (**Torrejón de Ardoz**) - Spain. This is also the base for all operations of the different departments; Production, Research & Development, Laboratory, Technical, Sales, Marketing and Administration.

### COMMITMENT TO QUALITY AND ENVIRONMENT

Our strong commitment to Quality Control and the Environment has led us to establish an Integrated Quality and Environmental Management System. This is based on the ISO 9001:2015 and ISO 14001:2015 standards, and it was certified by *Bureau Veritas Quality International*.

### COMMITMENT TO RESEARCH, DEVELOPMENT AND INNOVATION

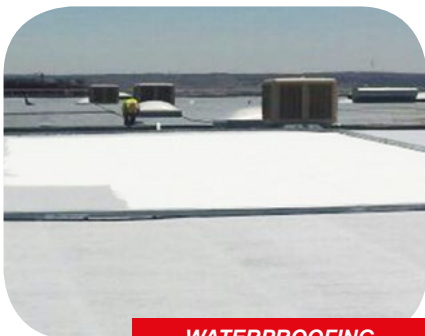
Our strong commitment to Research and Development of both our product range and of human resources enables us to offer the market innovative systems with a high standard of quality whilst being mindful of environmental concerns. These developments are transferred into improvements to our products range. This is based on substantial market research, including on-site experience under the most adverse worldwide conditions, combined with laboratory studies.

### TECHNICAL ASSISTANCE

Our Technical Department and Sales Network comprises of highly qualified professionals with wide experience and trained in the construction industry. They provide personalized advice to our clients during all phases of construction in order to specify the most suitable system of products.



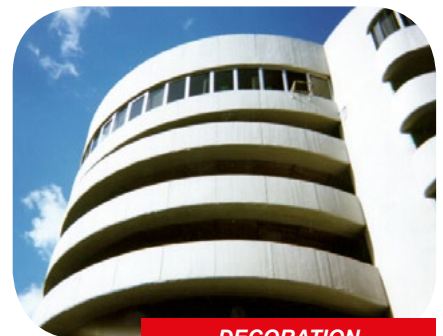
## DRIZORO TECHNICAL SOLUTIONS



WATERPROOFING



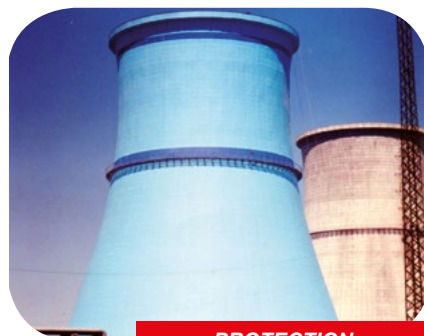
STRENGTHENING



DECORATION



REPAIR



PROTECTION



OTHERS USES

# ROAD AND URBAN MAINTENANCE WORK SYSTEMS

## REPAIR OF:

- ROADS
- HIGHWAYS
- AIRPORTS
- RAMPS, DOCKS AND LOADING AREAS
- TRANSPORT INFRASTRUCTURES

## ADVANTAGES FOR ROAD AND URBAN MAINTENANCE WORK DRIZORO SYSTEMS

- ✓ **FAST APPLICATION AND OPENING TO TRAFFIC** in a short period of time.
- ✓ High **RESISTANCE TO BOTH IMPACTS AND ABRASION**.
- ✓ Good **RESISTANCE TO CHEMICALS AND WEAR**.
- ✓ **PROTECTION OF SURFACES** in areas subject to abrasion; turns, ramps, etc.
- ✓ Good **ADHESION TO CONCRETE, STONE AND ASPHALT**.
- ✓ Excellent **WEATHERING RESISTANCE**.
- ✓ High **RESISTANCE TO CRACKING**.
- ✓ **EASY TO APPLY** and long lasting.

## BEDDING AND FIXING OF SEWER ELEMENTS



	Consistency	Thickness	Open to traffic
<b>WATMAT®</b>	Thixotropic	5 cm	1 - 2 h
<b>WATMAT® FLUID</b>	Fluid	1 - 6 cm	2 h



**WATMAT®**

### QUICK-SETTING THIXOTROPIC MORTAR FOR BEDDING AND FIXING

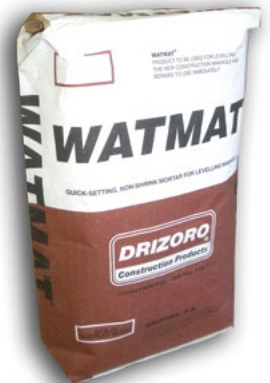
- Placement of covers, manholes frames, and other sewer elements.
- Horizontal repairs.
- Available winter (-W) and summer (-S) versions.



**WATMAT® FLUID**

### FLUID QUICK-SETTING MORTAR FOR FIXING

- Placement of covers, manholes frames, and other sewer elements.
- Horizontal repairs and filling of voids by pouring.
- Anchoring and fixing of urban furniture.








# PATCHING AND REPAIR

**MAXROAD®**

**VERY FAST-SETTING MORTAR FOR CONCRETE REPAIR ON HIGHWAYS, BRIDGES AND INDUSTRIAL AREAS SUBJECT TO ROAD TRAFFIC WITH RETURN TO USE IN 2 HOURS**

-  Urgent repairs on concrete pavements subjected to heavy road traffic.
-  Interior and exterior repairs on concrete floors in industrial buildings, loading docks, warehouses, access ramps, etc.
-  Repair of concrete pavements, filling of voids and defects, prior to levelling surfaces with fluid mortars.



## MAXROAD® APPLICATION



	Features		Thickness		Opening to traffic			Compressive strength (MPa)			
	Base	Comp.	Pure	Aggregate	Light Traffic	Medium Traffic	Heavy Traffic	2 h	24 h	7 d	28 d
<b>MAXPATCH®</b>	Cement / Acrylic Resin	2	0,5-2,5	>2,5	24 h	48 h	5 d				31
<b>MAXPATCH® -M</b>	Cement / Water	1	0,5-2,5	>2,5	24 h	48 h	5 d				>35
<b>MAXROAD®</b>	Cement / Water	1	3,0-5,0	>5,0	2 h	2 h	2 h	15	27,4	40,4	42,8
<b>MAXROAD® EXPRESS</b>	Cement / Water	1	3,0-5,0	>5,0	2 h	2 h	2 h				88
<b>MAXMORTER® -F</b>	Cement / Water / Aggregate	1 + DRIZORO SILICA	---	>5,0	---	---	16 h	8	20		45
<b>MAXPATCH® MC</b>	Cement / Methacrylate Resin	2 + DRIZORO SILICA		>5,0	1 h	2 h	3 h	40	>60		>80
<b>MAXPATCH® ASPHALT</b>	Cold Reactive Asphalt	1	3-10	---	---	---	---				

## TWO COMPONENT PATCHING MORTAR WITH NORMAL SETTING TIME FOR RESTORATION AND DECORATIVE FINISHING OF CONCRETE PAVEMENTS

**MAXPATCH®**



- Restoration of concrete pavements and floors, roads and highways, loading docks and surfaces subject to great wear in warehouses, industrial facilities, workshops, etc.
- Patching horizontal surfaces that require screeding or leveling.
- Non-slip ramps with good resistance to road traffic.
- Restoration of steps and concrete stairs.

## MODIFIED CEMENT FOR THE PRODUCTION OF MULTI-PURPOSE FAST-SETTING MORTARS

**MAXMORTER® -F**



- Repair of concrete structures, rolling layers and floors with fast putting into service.
- Fixing of elements on concrete.
- Fast setting time: 10-20 minutes.



## METHYL METHACRYLATE (MMA) MORTAR FOR VERY URGENT REPAIR OF PAVEMENT AT LOW-TEMPERATURE

**MAXPACTH® MC**



- Urgent repairs in 1 hour of concrete pavements, highways and roads, loading docks and surfaces subject to great wear in warehouses, industrial facilities, workshops, etc.
- Urgent repairs of highways, airport runways and other routes in very low temperature weather conditions.
- Two versions available:
  - **MAXPACTH® MC-S.** Application temperature from 0°C to 40°C
  - **MAXPACTH® MC-W.** Application temperature from -20°C to 0°C



# PATCHING AND REPAIR

## MAXPATCH® ASPHALT

**RESIN-MODIFY COLD ASPHALT PRODUCT FOR PATCHING AND REPAIR**

- Placing lids, arches, grates and sewer elements.
- Repair and patching on roads, highways, car parks and asphalt sidewalks.
- Slopes, soundtracks for traffic control, and access ramps on sidewalks, garages, etc.



## BEDDING AND FIXING OF COBBLES AND CURBS

	Consistency	Thickness	Opening to traffic
<b>WATMAT® FIX</b>	Thixotropic	1 cm	2 h
<b>MAXJOINT® PAV</b>	Fluid	2 cm	24 h

## WATMAT® FIX

**FAST-SETTING THIXOTROPIC MORTAR FOR FIXING ON CONCRETE AND ASPHALT**

- Fixing of curbs, vertical signage and street furniture.
- Bedding mortar for large cobblestones, tiles and blocks.





# BEDDING AND FIXING OF COBBLES AND CURBS

## CEMENT POINTING MORTAR FOR COBBLESTONE

- Grouting of exterior cobblestone floors, natural stone, precast elements, slate.

**MAXJOINT® PAV**



## DRAINING PAVEMENTS AND STONE CARPETS

**MAXURETHANE® PAV**

### DRAINING PETROUS CARPET

**TRANSPARENT ALIPHATIC BINDER FOR AGGLOMERATES AND PAVEMENTS**

- Pedestrian pavements and sidewalks subjected to light traffic with different finishes according to color, size and nature of the aggregate used.
- Stone finishes and coatings applied on asphalt substrates.
- Draining pavement for corks, fountains and lakes in parks.



PRODUCT	CONSUMPTION	PACKAGING
<b>MAXPATCH®</b> Normal setting-time, two-component, cement-based patching mortar for application thickness from 5 to 25 mm. Available Smoot (Fino) / Extra-smooth (Extra Fino) versions. Available colour chart and pigments for coloured versions: <b>MAXPATCH® DECOR</b> .	CE 2,0 kg/m <sup>2</sup> ·mm	30 kg pre-weighed sets
<b>MAXPATCH® -M</b> Normal-setting-time, one-component, cement-based patching mortar for application thickness from 5 to 25 mm. Available Smoot (Fino) / Extra-smooth (Extra Fino) versions. Available colour chart and pigments for coloured versions: <b>MAXPATCH® DECOR</b> .	CE 2,0 kg/m <sup>2</sup> ·mm	25 kg bags
<b>MAXROAD®</b> Very fast-setting (15 minutes), one-component, cement-based patching mortar for application thickness from 30 to 50 mm. Placing into service 2 h.	CE 2,0 kg/m <sup>2</sup> ·mm	25 kg bags and 25 kg drums
<b>MAXROAD® EXPRESS</b> Very fast-setting (60 minutes), one-component, fluid cement-based patching mortar for application thickness from 30 to 50 mm or large volumens. Placing into service 2 h.	CE 2,0 kg/m <sup>2</sup> ·mm	25 kg bags and 25 kg drums
<b>MAXPATCH® MC</b> Very fast-setting, two-component, methyl methacrylate patching mortar for application thickness from 5 mm, and low temperature use. Available in summer ( <b>MC-S</b> ) and winter ( <b>MC-W</b> ) versions.	CE Depending on use	20 kg pre-weighed sets
<b>MAXPATCH® ASPHALT</b> Ready to use, resin-modify cold asphalt repair and patching product for asphalt pavements.	1,7 kg/m <sup>2</sup> ·mm	25 kg drums
<b>MAXMORTER® -F</b> Modified cement for mixing of fast-setting and multi-purpose mortars.	Depending on use	20 kg bags
<b>WATMAT®</b> Fast-setting, one-component, thixotropic, non-shrink, cement-based anchoring and fixing mortar for manhole frames and construction elements. Available in summer ( <b>-S</b> ) and winter ( <b>-W</b> ) versions.	CE 1,7 kg/l	25 kg drums and 25 kg bags
<b>WATMAT® FLUID</b> Fast-setting, one-component, non-shrink, cement-based levelling and fixing fluid mortar for manhole covers and construction elements. Available in summer ( <b>-S</b> ) and winter ( <b>-W</b> ) versions.	CE 1,8 kg/l	25 kg bags
<b>WATMAT® FIX</b> Fast-setting, one-component, thixotropic, cement-based fixing mortar for elements on concrete and asphalt.	2,0 kg/l	25 kg bags
<b>MAXJOINT® PAV</b> High fluidity cement-based pointing mortar for filling of joints in stone, flagstones or concrete paving.	2,0 kg/l	25 kg bags
<b>MAXURETHANE® PAV</b> Transparent, one-component, solvent-free and 100% solid, aliphatic polyurethane binder for stone carpet and draining pavements.	2-6 % (w/w aggregate)	25 kg drums



### DRIZORO, S.A.U.

C/ Primavera, 50-52 Parque Industrial Las Monjas  
 28850 TORREJÓN DE ARDOZ - MADRID (Spain)  
 Tel.: (34) 91 676 66 76 - (34) 91 677 61 75 FAX: (34) 91 675 78 13  
 E-mail: [info@drizoro.com](mailto:info@drizoro.com) - Web: [www.drizoro.com](http://www.drizoro.com)